

INTRODUCTION:

Adam Tech IEC & Mini IEC Series AC Inlets and Outlets are primary power receptacles designed, manufactured, tested and approved to UL, CSA, VDE and other applicable international specifications including IEC-60320 and CEE-22. Adam Tech offers a wide variety of body styles, shapes and orientations to accommodate most class I & II applications with two or three blade contacts in both IEC and Mini-IEC configurations. Mounting choices include screw holes and snap-in versions and four termination styles. Options of ganged ports or receptacle with integral fuse holder are also available.

FEATURES:

IEC & Mini-IEC types
IEC-60320, CEE-22 Compliant
UL, CSA and VDE approved
Multitude of Body Styles
Choice of terminations
Option of Integral Fuse Holder

MATING CONNECTORS:

Adam Tech PC series power cords and all standard international IEC 60320 power supply cords.

SPECIFICATIONS:

Material:

Insulator: Polycarbonate or Nylon 66, glass filled, rated UL94V-0
Insulator Color: Black
Contacts: Phosphor Bronze or Brass

Plating:

Nickel over copper underplate. (Solder terminals: Tin over copper underplate)

Electrical:

Operating Voltage: 250V AC
Current Rating: IEC - UL & CSA: 15 Amps Max,
VDE: 10 Amps Max.
Mini IEC - UL, CSA & VDE 2.5 Amps Max.
Insulation Resistance: 100 MΩ Min. @ 500V DC
Dielectric Withstanding Voltage: 2000V AC for 1 Minute

Temperature Rating:

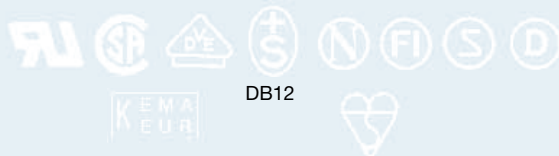
Operation Temperature: -25°C ~ +70°C

PACKAGING:

Anti-ESD plastic trays

SAFETY AGENCY APPROVALS:

UL Recognized File Nos. E224049, E224050, E224051, E224052
CSA Certified File No. 226373



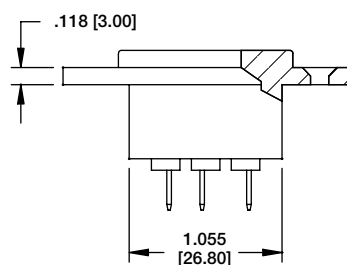
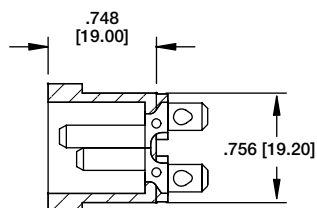
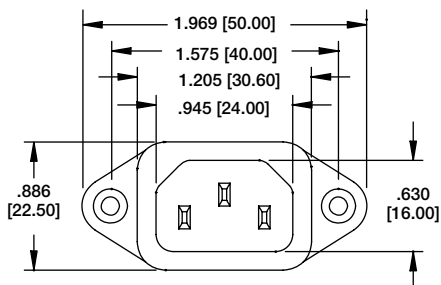
ORDERING INFORMATION

IEC	A	1	150
SERIES INDICATOR IEC = International inlet/outlet		TERMINALS 1 = .187" Quick-connect terminals 2 = .250" Quick-connect terminals 3 = Solder terminals .157" [4.0mm] 4 = Right Angle PCB mount 5 = Solder Terminals .098" [2.5mm]	PANEL THICKNESS (for body styles C, D & J only) Blank = Universal Snap 080 = 0.8mm Panel 120 = 1.2mm Panel 150 = 1.5mm Panel 200 = 2.0mm Panel 300 = 3.0mm Panel
BODY STYLE			
A = Male Inlet, Screw-on panel mount B = Female Outlet, Screw-on panel mount C = Male Inlet, Snap-in panel mount D = Female Outlet, Snap-in panel mount E = Male Inlet, Right Angle PC board mount with mounting flange (Specify EW, EX, EY or EZ) F = Male Inlet, Screw on panel mount with 5 x 20mm fuse holder G = Male Inlet, Snap-in panel mount with 5 x 20mm fuse holder HS = Inlet/Outlet, snap-in panel mount HR = Inlet/outlet, snap-in panel mount, right angle PCB mount J = Male inlet, right angle PCB & tail with snap-in panel mounting NA = Mini-IEC right angle, snap-in NB = Mini-IEC right angle, slide-in NB-A = Mini-IEC right angle, slide-in with pegs NC = Mini-IEC right angle, with flush flange NC-A = Mini-IEC right angle, with extended face ND = Mini-IEC right angle, with enclosed body NF = Mini-IEC right angle, polarized with flange NH = Mini-IEC right angle, with ground pin NH-A = Mini-IEC right angle, flange mount with ground pin GS = Fused inlet with switch snap in panel mount FS = Fused inlet with switch screw on panel mount			

OPTIONS:

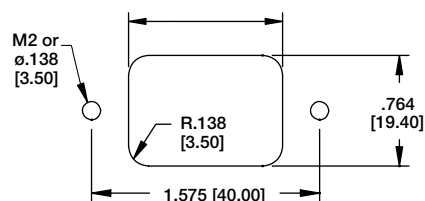
K = Keyed for 120° C (Body Styles A, C, E & J)
M = Female outlet, 20 AMP, Flanged
N = Male inlet, 20 AMP, Snap-In

IEC-A SCREW ON PANEL MOUNT



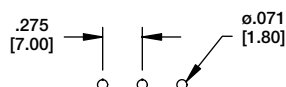
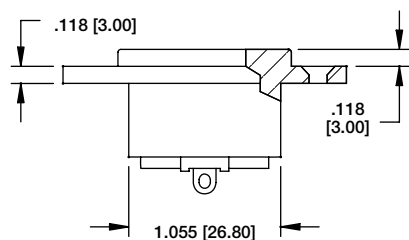
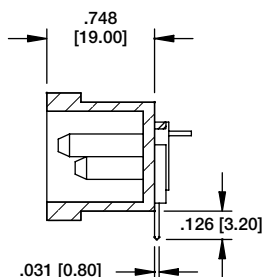
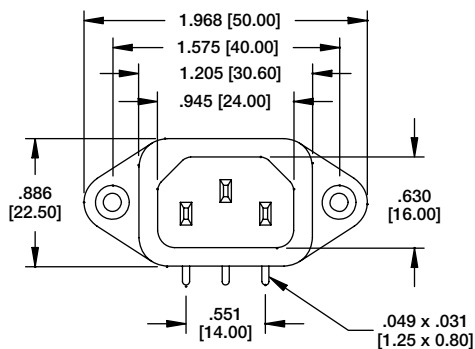
IEC-A-1

1.075 [27.30] Front Mounting
1.212 [30.80] Rear Mounting



TERMINAL OPTIONS			
1	2	3	5
.187 Q.C.	.250 Q.C.	.157 Solder	.098 Solder

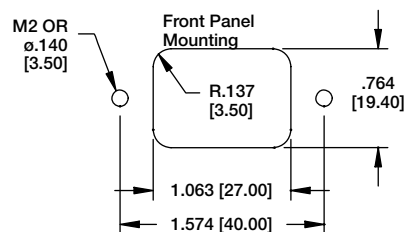
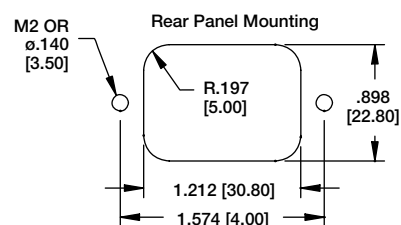
IEC-A SCREW ON PANEL RIGHT ANGLE PCB MOUNT



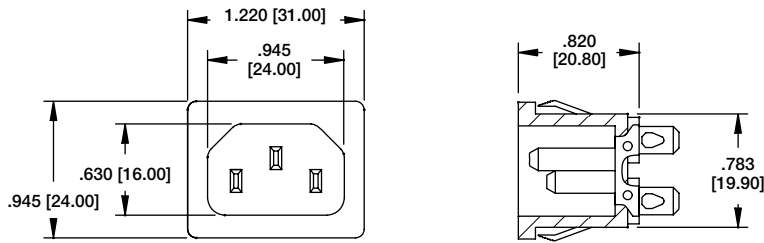
Recommended
PCB Layout



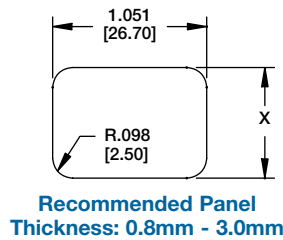
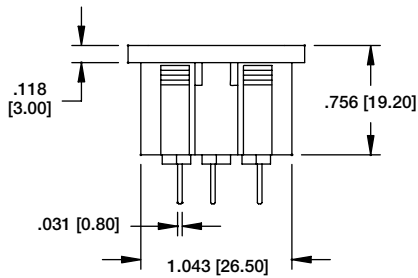
IEC-A-4



IEC-C UNIVERSAL PANEL SNAP



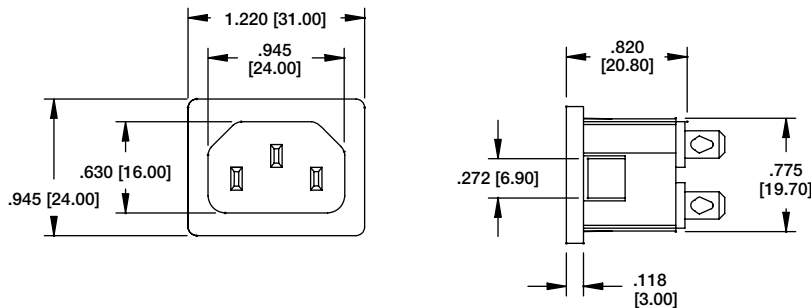
IEC-C-1



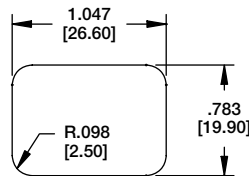
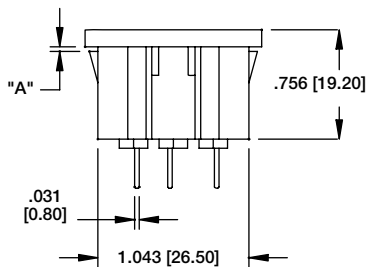
PANEL THICKNESS	DIM X
.031-.039 [0.8-1.0]	.780 [19.8]
.039-.059 [1.0-1.5]	.784 [19.9]
.079-.119 [2.0-3.0]	.788 [20.0]

TERMINAL OPTIONS			
1	2	3	5
.187 Q.C.	.250 Q.C.	.157 Solder	.098 Solder

IEC-C DEDICATED PANEL SNAP



IEC-C-1-150



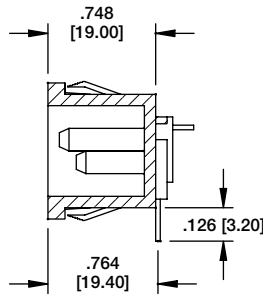
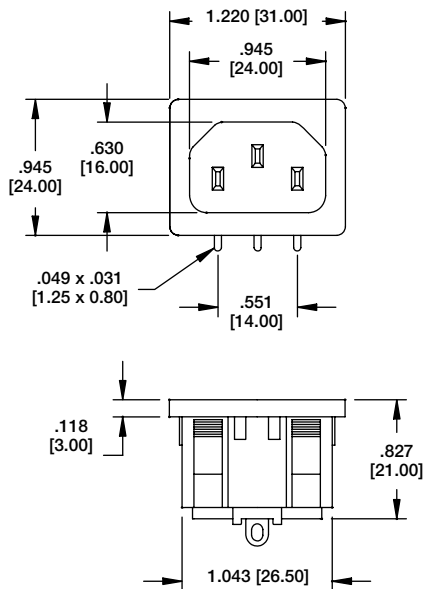
PANEL THICKNESS	PART NUMBER	DIM "A"
0.8mm	IEC-C-X-080	.031 [0.80]
1.5mm	IEC-C-X-150	.059 [1.50]
3.0mm	IEC-C-X-300	.118 [3.00]
4.0mm	IEC-C-X-400	.157 [4.00]

Replace X with terminal option below

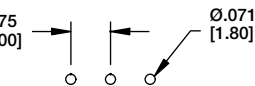
TERMINAL OPTIONS			
1	2	3	5
.187 Q.C.	.250 Q.C.	.157 Solder	.098 Solder

IEC-J

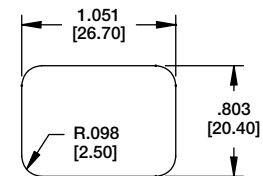
UNIVERSAL PANEL SNAP RIGHT ANGLE PCB MOUNT



IEC-J-4



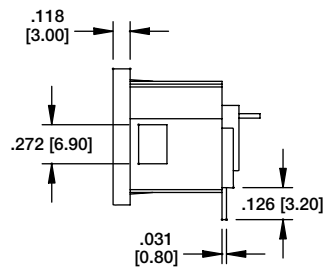
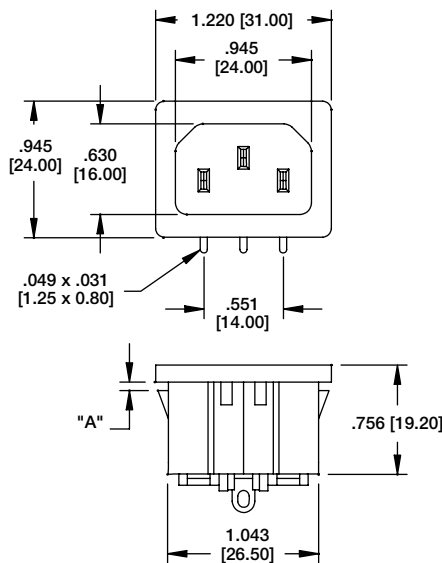
Recommended PCB
Layout



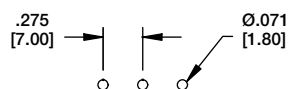
Recommended Panel
Thickness: 0.80 - 3.0mm

IEC-J

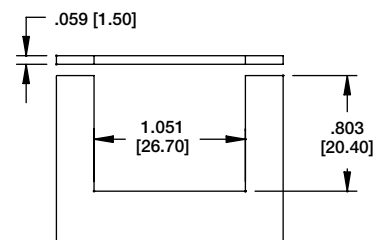
DEDICATED PANEL SNAP RIGHT ANGLE PCB MOUNT



IEC-J-4-150



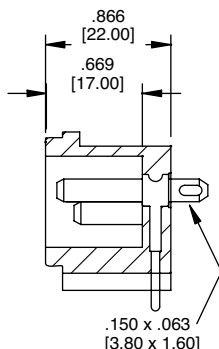
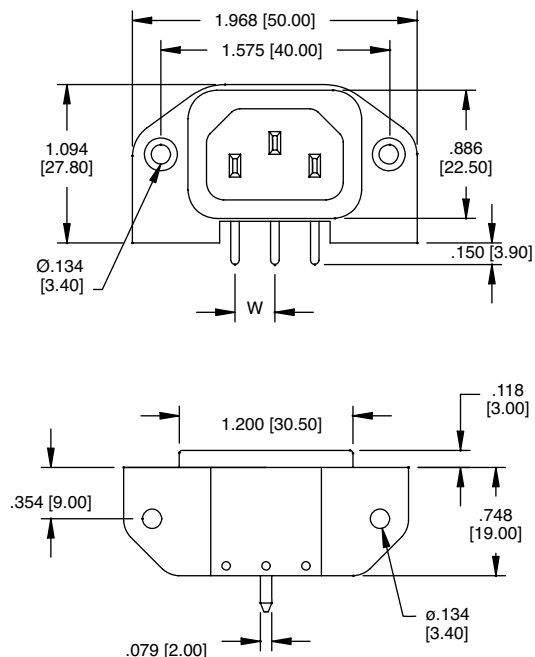
Recommended PCB
Layout



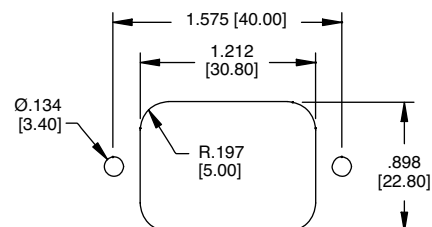
Recommended Panel Cut-Out

PANEL THICKNESS	PART NUMBER	DIM "A"
0.8mm	IEC-J-4-120	.047 [1.20]
1.5mm	IEC-J-4-150	.059 [1.50]
3.0mm	IEC-J-4-200	.079 [2.00]
4.0mm	IEC-J-4-300	.118 [3.00]

IEC-E FLANGED RIGHT ANGLE PCB MOUNT



IEC-EW-4

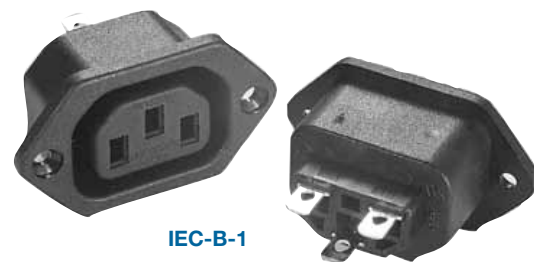
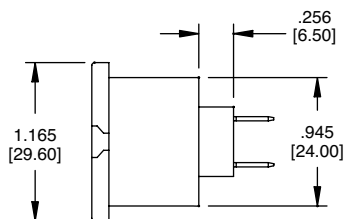
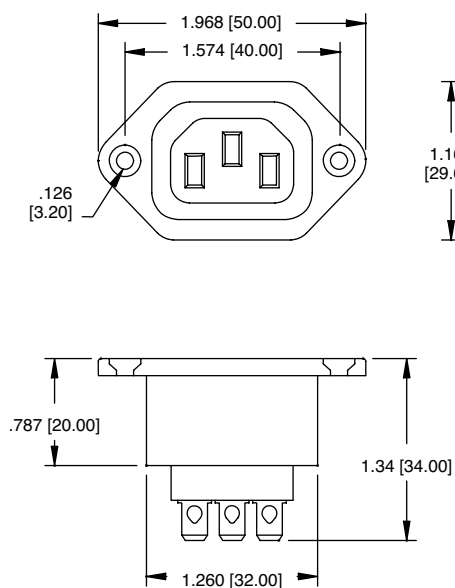


Recommended Panel Cut-Out

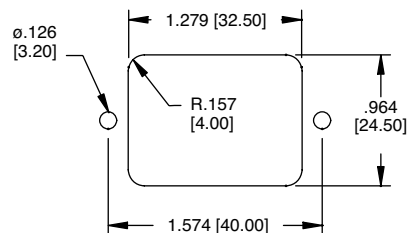
DIMENSIONAL		
PART NO.	F	W
IEC-EW	.287 [7.30]	.276 [7.00]
IEC-EX	.287 [7.30]	.358 [9.10]
IEC-EY	.382 [9.70]	.276 [7.00]
IEC-EZ	.382 [9.70]	.358 [9.10]

Recommended PCB Layout

IEC-B FLANGED SCREW ON PANEL MOUNT



IEC-B-1

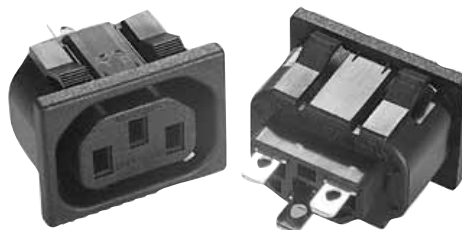
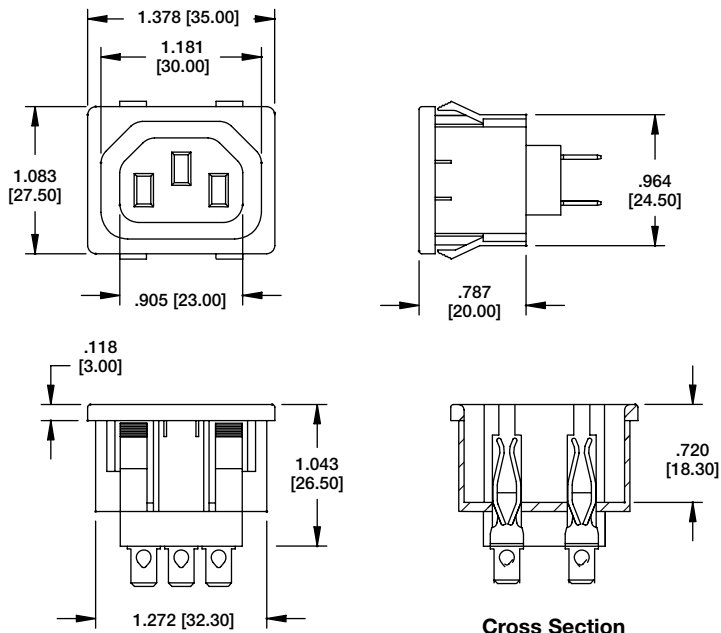


Recommended Panel Cut-Out

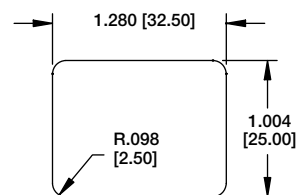
TERMINAL OPTIONS		
1	2	3
.187 Q.C.	.250 Q.C.	.157 Solder

Cross Section

IEC-D UNIVERSAL PANEL SNAP



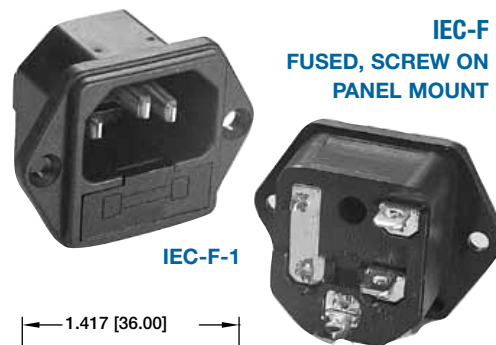
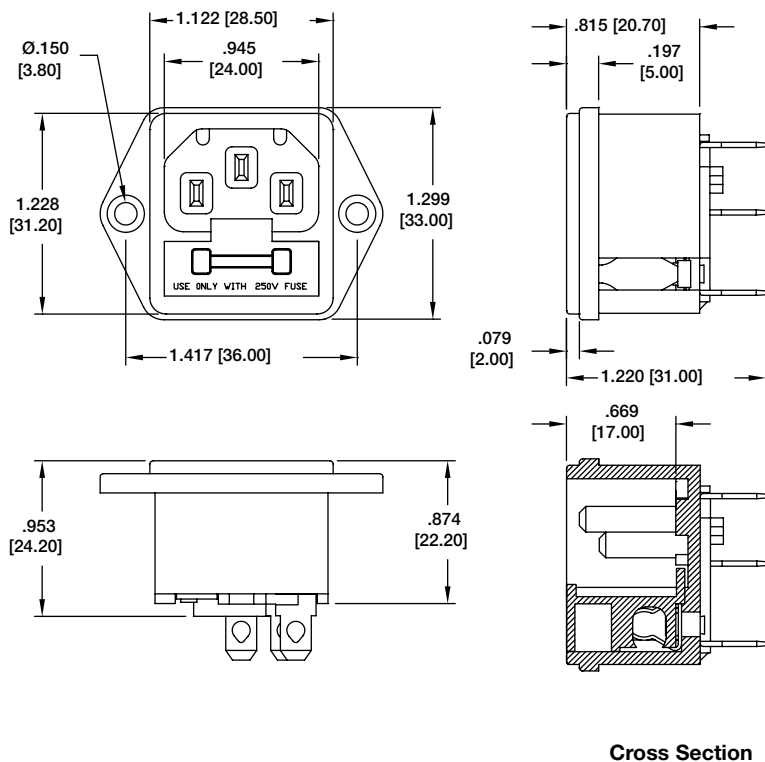
IEC-D-1



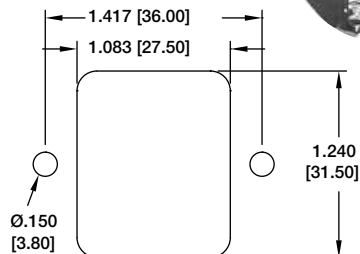
Recommended Panel Thickness:
0.8mm - 3.0mm

TERMINAL OPTIONS		
1	2	3
.187 Q.C.	.250 Q.C.	.157 Solder

IEC-F FUSED, SCREW ON PANEL MOUNT

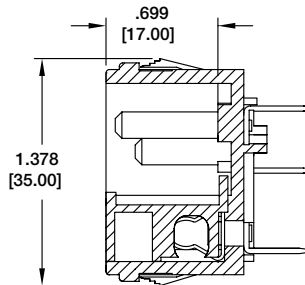
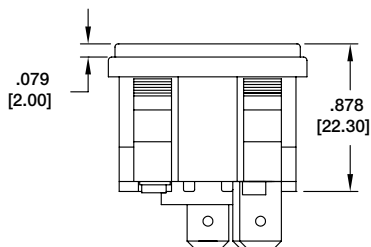
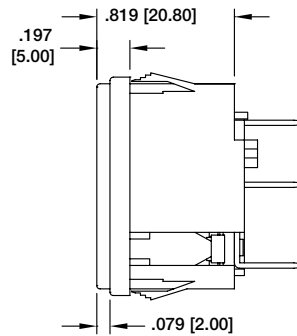
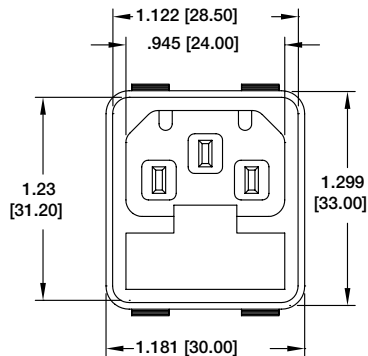


IEC-F-1



Recommended Panel Cut-Out

TERMINAL OPTIONS	
1	2
.187 Q.C.	.250 Q.C.



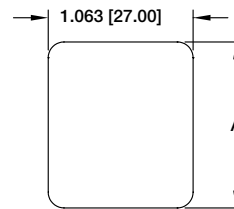
Cross Section

PANEL THICKNESS	DIM X
.031-.071 [0.8-1.8]	1.240 [31.50]
.075-.126 [1.9-3.2]	1.248 [31.70]



IEC-G-1

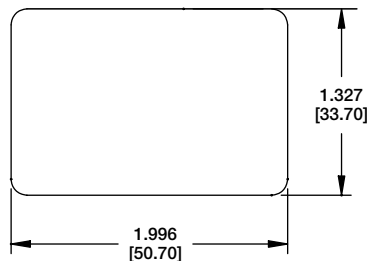
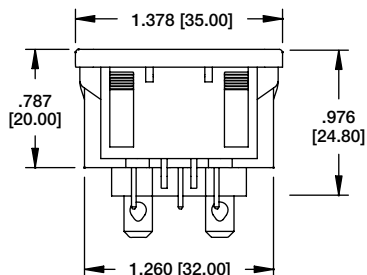
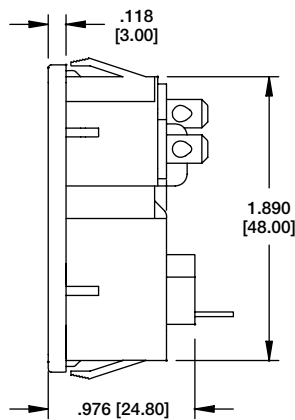
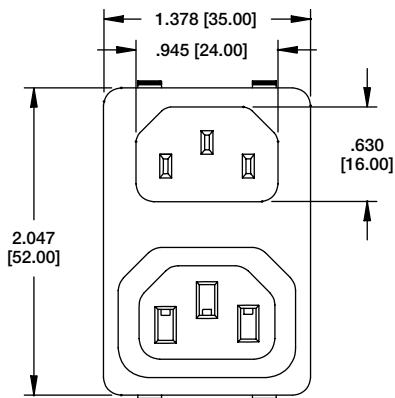
IEC-G
FUSED WITH UNIVERSAL
PANEL SNAP



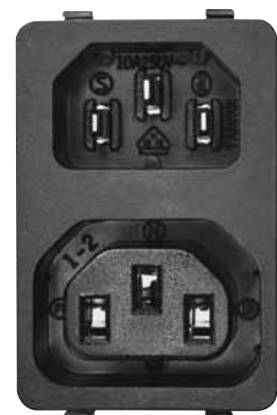
PANEL THICKNESS	DIMENSIONS A
.031-.071 [0.80-1.80]	1.240 [31.50]
.075-.126 [1.90-3.20]	1.248 [31.70]

Recommended Panel Cut-Out

TERMINAL OPTIONS		
1	2	5
.187 Q.C.	.250 Q.C.	.157 Solder

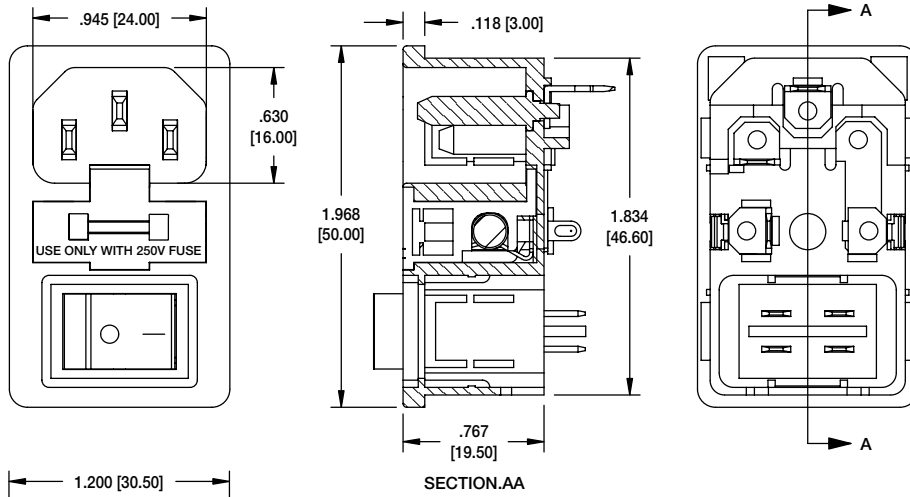


Recommended Panel Cut-Out



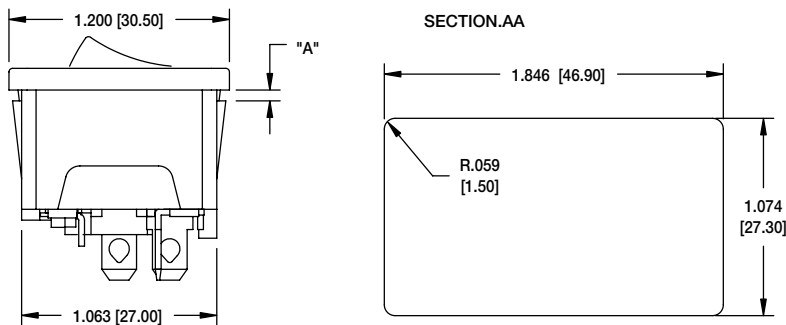
IEC-HS-1

IEC-HS
FUSED INLET & OUTLET
WITH UNIVERSAL
PANEL SNAP



IEC-GS-1
FUSED INLET WITH SWITCH,
SNAP IN PANEL MOUNT

PART NUMBER	DIM "A"
IEC-GS-1-100	.039 [1.00]
IEC-GS-1-150	.059 [1.50]
IEC-GS-1-200	.079 [2.00]

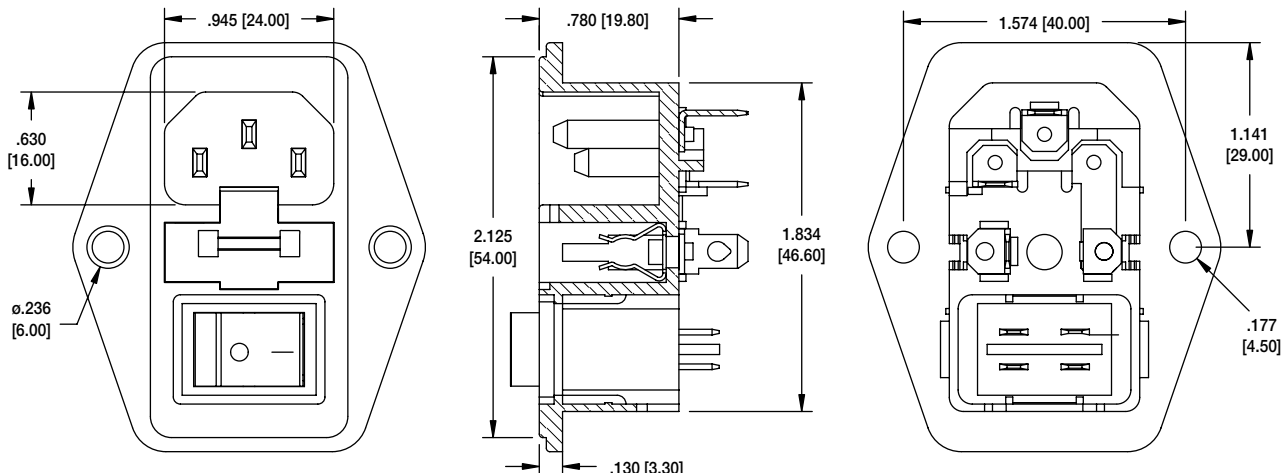


IEC-GS-1-100

Recommended Panel Cut-Out

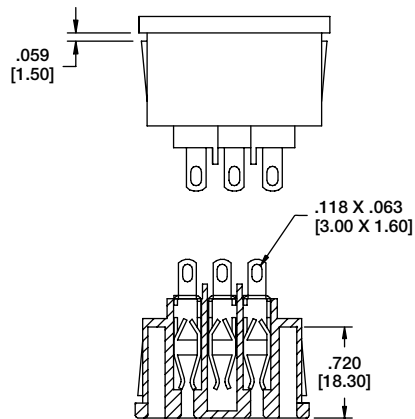
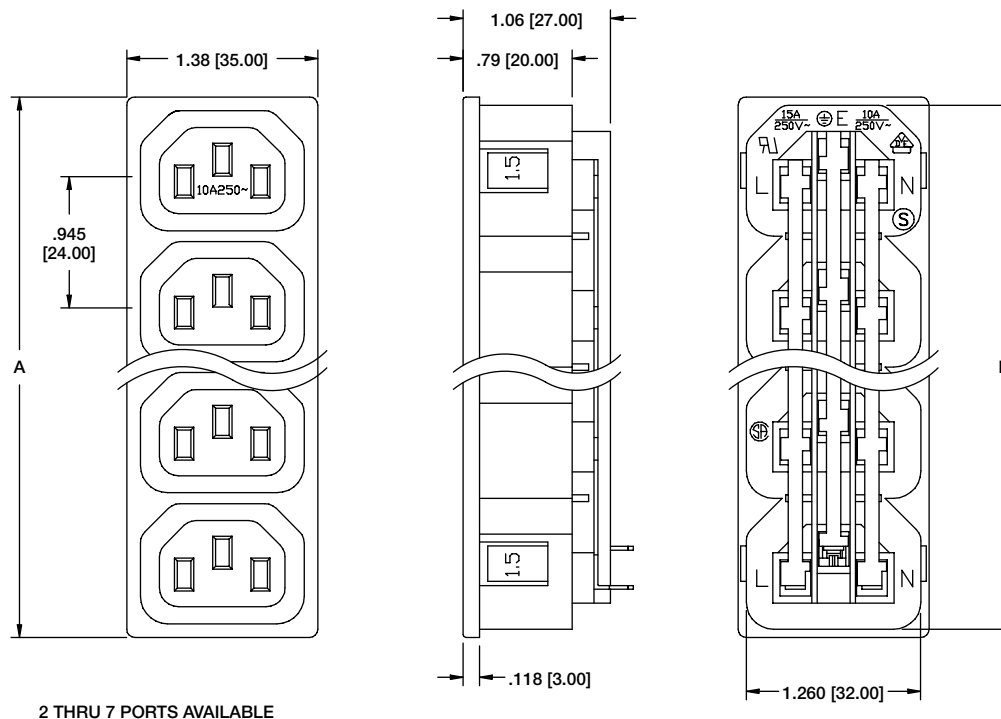


IEC-FS-1
FUSED INLET WITH SWITCH,
SCREW ON PANEL MOUNT



IEC-FS-1

IEC-D-S STACKED OUTLETS WITH DEDICATED PANEL SNAPS



Cross Section

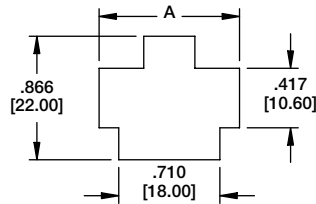
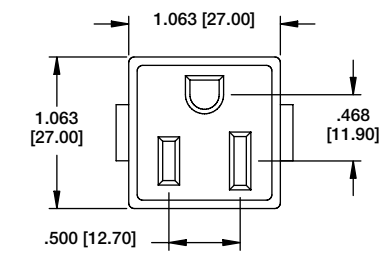
Recommended Panel Cut-Out



IEC-D-S4-150

DIMENSIONS				
PART NUMBER	PORTS	A	B	C
IEC-D-S2-150	2	2.007 [51.00]	1.890 [48.00]	1.901 [48.30]
IEC-D-S3-150	3	2.953 [75.00]	2.835 [72.00]	2.846 [72.30]
IEC-D-S4-150	4	3.897 [99.00]	3.780 [96.00]	3.791 [96.30]
IEC-D-S5-150	5	4.842 [123.00]	4.724 [120.00]	4.736 [120.30]
IEC-D-S6-150	6	5.787 [147.00]	5.670 [144.00]	5.681 [144.30]
IEC-D-S7-150	7	6.732 [171.00]	6.614 [168.00]	6.626 [168.30]

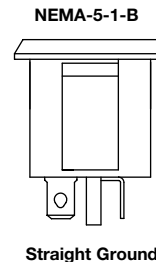
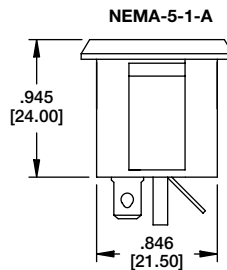
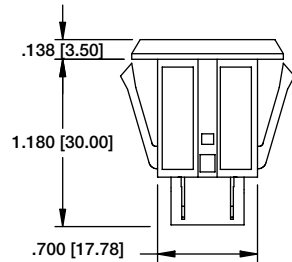
*PART NUMBERS SHOWN ARE FOR 1.5mm PANEL THICKNESS. CONSULT FACTORY FOR OTHER PANEL THICKNESSES REQUIREMENTS



PANEL THICKNESS	DIM. A
.031 [0.80]	.945 [24.00]
.039 [1.00]	.968 [24.60]
.047 [1.20]	.992 [25.20]
.063 [1.60]	1.031 [26.20]

**NEMA-5-1-X
UNIVERSAL
PANEL SNAP**

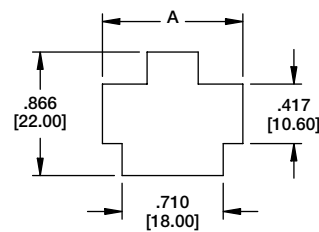
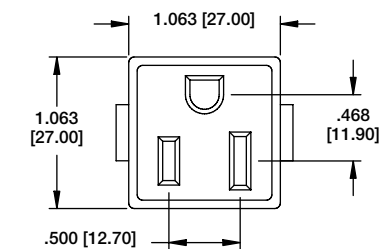
**Recommended Panel Cut-Out For
1.50mm Panel Thickness**



Straight Ground



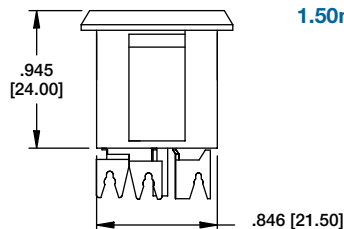
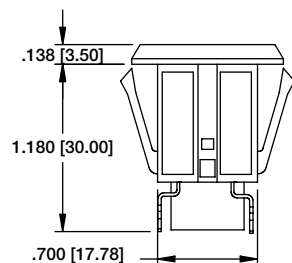
NEMA-5-1



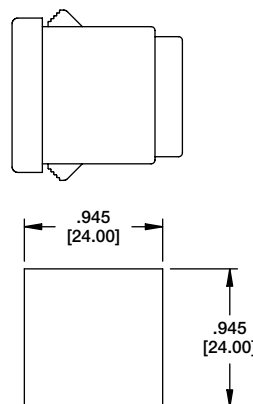
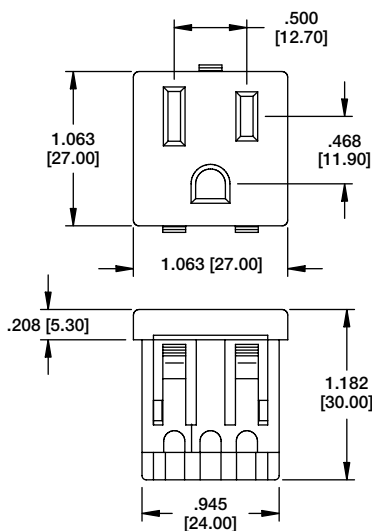
**NEMA-5-2
UNIVERSAL
PANEL SNAP**

12-14 Awg

**Recommended
Panel Cut-Out For
1.50mm Panel Thickness**



NEMA-5-2

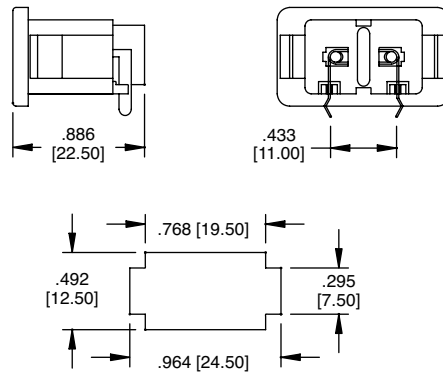
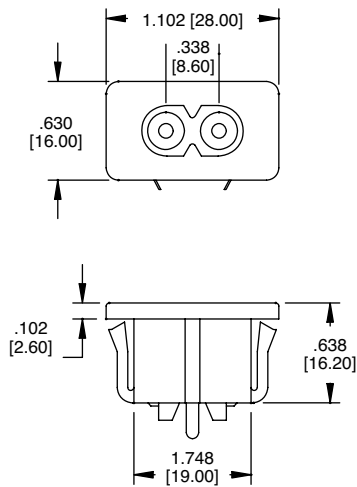


**NEMA-5-3
UNIVERSAL
PANEL SNAP**

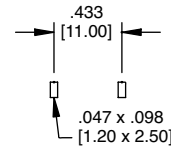
**Recommended Panel Cut-Out For
Panel 0.8mm - 1.50mm**



NEMA-5-3

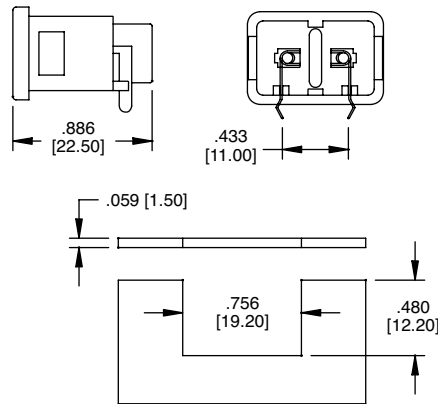
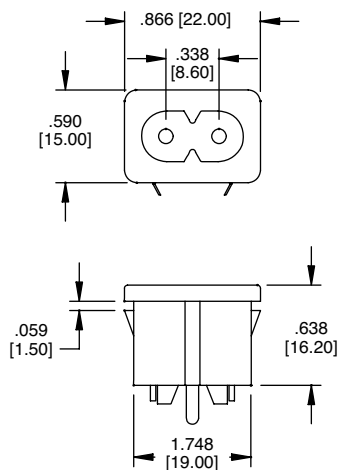


Recommended Panel Cut-Out

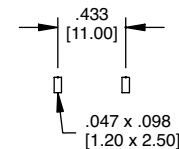


Recommended PCB Layout

IEC-NA-4
UNIVERSAL PANEL SNAP

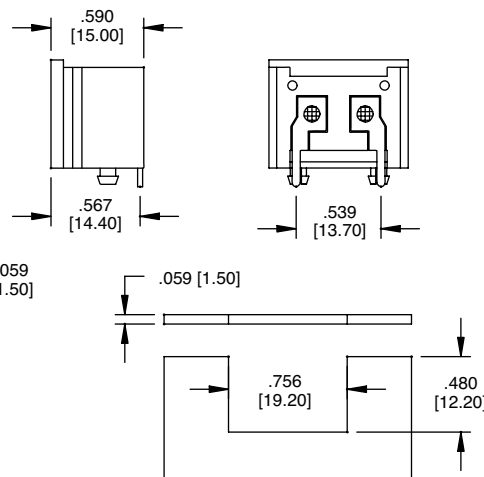
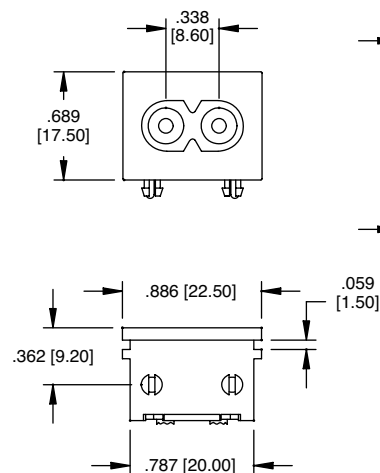


Recommended Panel Cut-Out

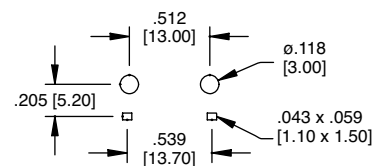


Recommended PCB Layout

IEC-NB-4
DEDICATED PANEL SNAP



Recommended Panel Cut-Out

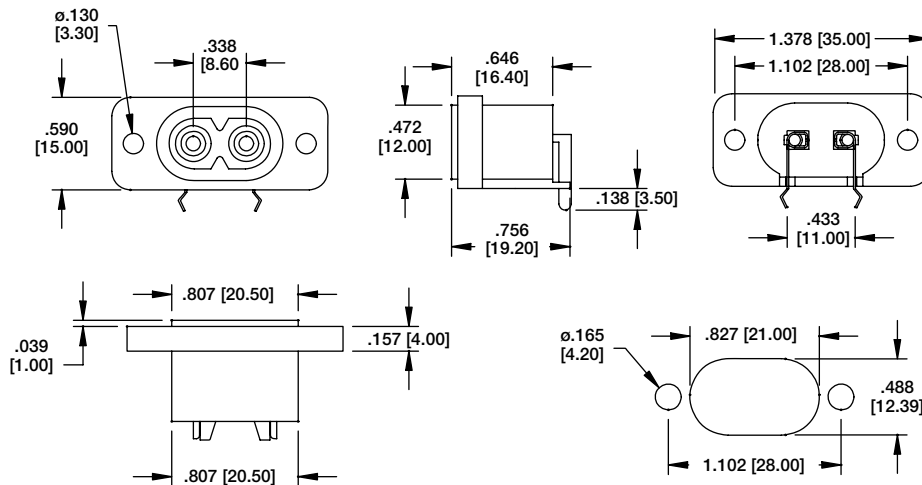


Recommended PCB Layout

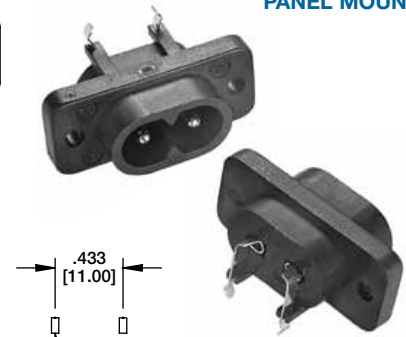
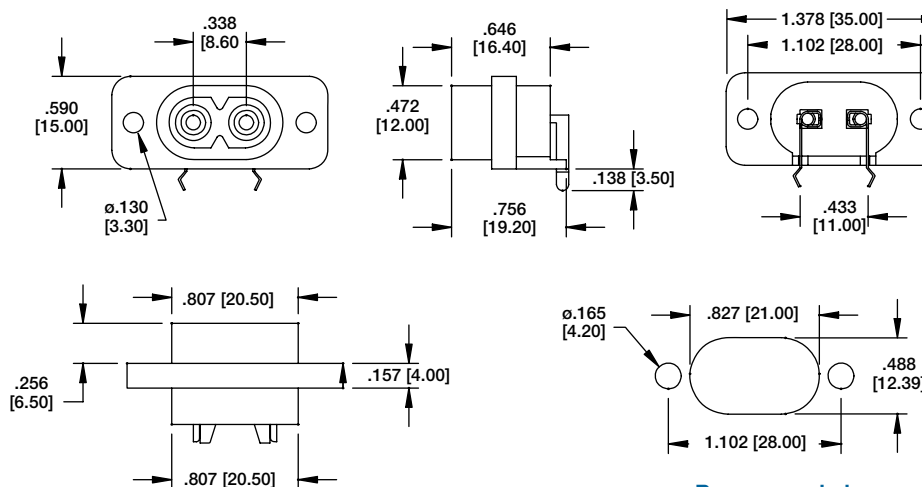
IEC-NB-A-4
SLIDE ON PANEL



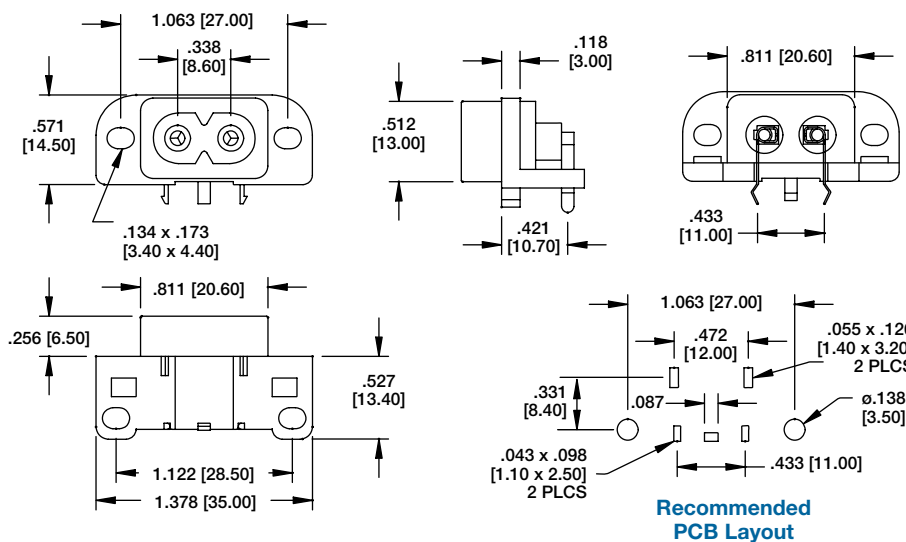
IEC-NC-4 RIGHT ANGLE PANEL MOUNT



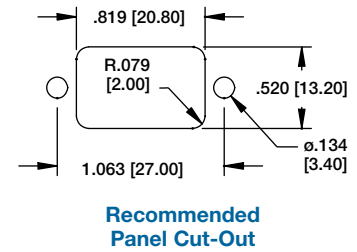
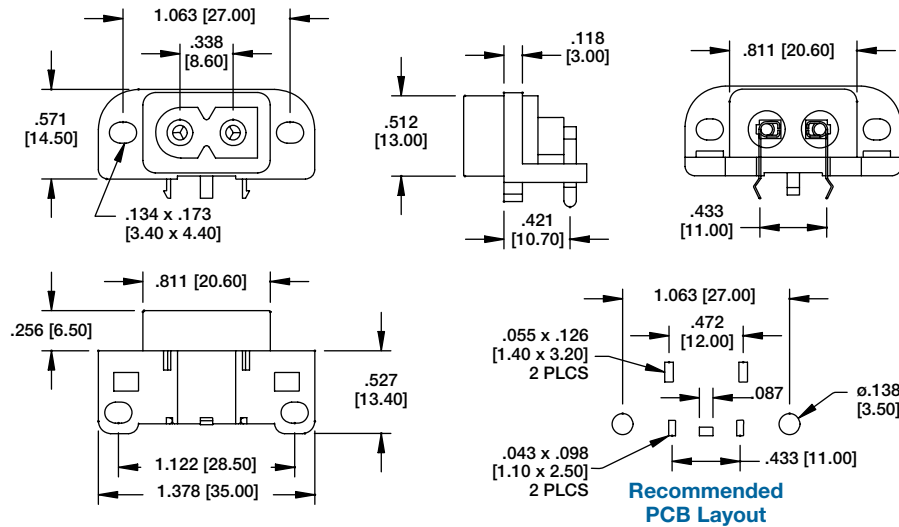
IEC-NC-A-4 RIGHT ANGLE PANEL MOUNT



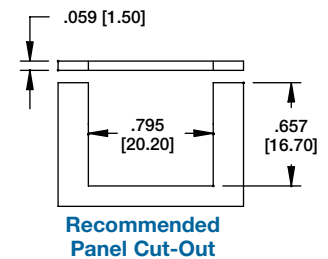
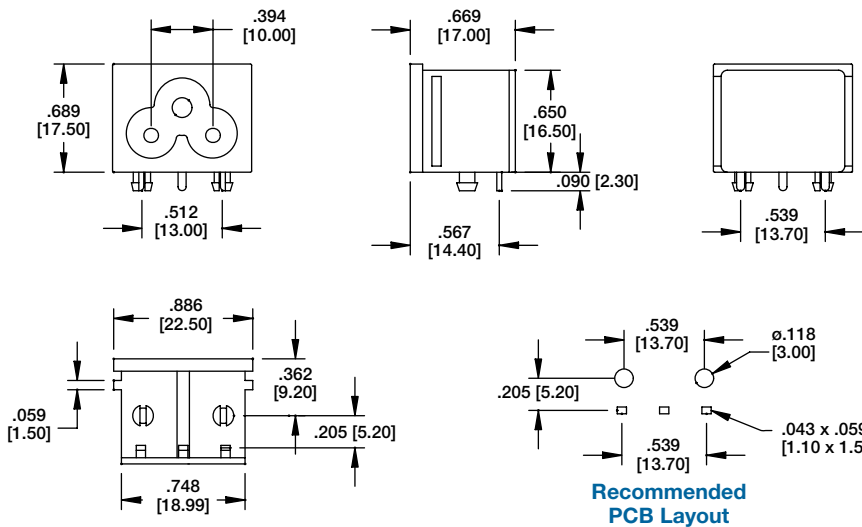
IEC-ND-4 RIGHT ANGLE PANEL MOUNT



IEC-NF-4 RIGHT ANGLE PANEL MOUNT



IEC-NH-4 RIGHT ANGLE SLIDE ON PANEL



IEC-NH-A-4 RIGHT ANGLE SCREW ON PANEL MOUNT

